



Gratis Künstlerexemplare für Tanzorchester

www.schwanzer.at

QUICKSTEP DANCING

Medley von Jo Waldo

Arrangement: Hans Schwarz

Besetzung:

1./2. ALTSAXOPHON * 1./2. TENORSAXOPHON * BARITONSAXOPHON

1./2./3. TROMPETE * 1./2. POSAUNE

PIANO * BASS * DRUMS

Durch die enormen Portokosten stellen wir unsere Künstlerexemplare für Orchester nun ONLINE zur Verfügung. Bitte gespielte Titel in die Programmlisten der Verwertungsgesellschaften wie AKM, SUISA, GEMA etc. eintragen.

QUICKSTEP DANCING

1. ALTSAXOPHON

ZUSAMMENSTELLUNG : JO WALDO

ARRANGEMENT : HANS SCHWARZ

3
TUTTI
f

1 OH MY DARLING CLEMENTINE
SOLI

8

16 1 2

23 2 ROCK MY SOUL
TUTTI PLAY
3

1.x TACET

32 4 DOWN BY THE RIVERSIDE
SOLI

39

45 5 12

63 6 TUTTI

70 SOLI

77 2

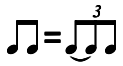
84 TUTTI
ff

2. ALTSAXOPHON

QUICKSTEP DANCING

ZUSAMMENSTELLUNG : JO WALDO

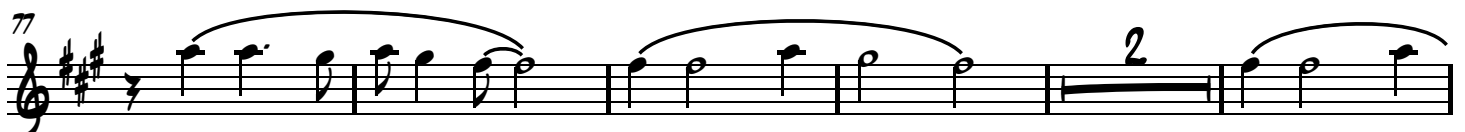
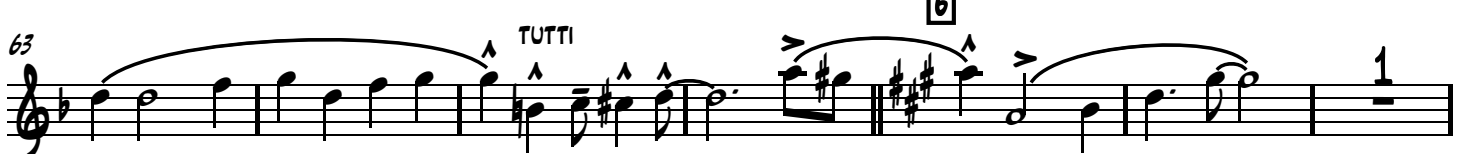
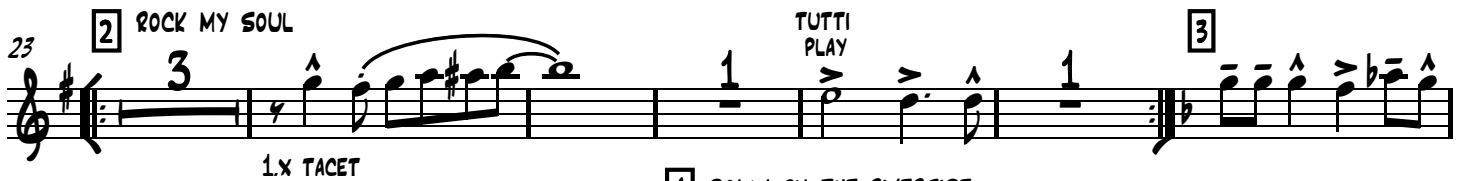
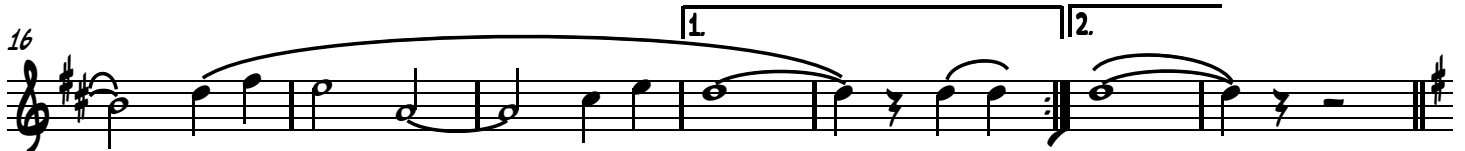
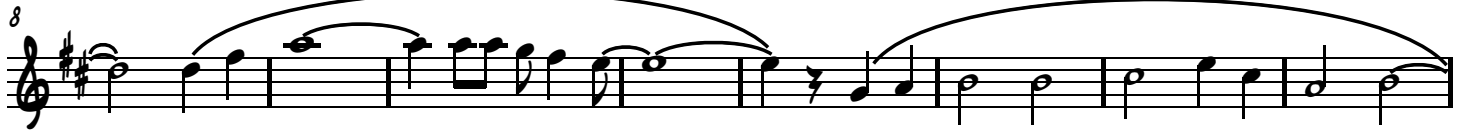
ARRANGEMENT : HANS SCHWARZ



TUTTI

1 OH MY DARLING CLEMENTINE

SOLI



QUICKSTEP DANCING

1. TENORSAXOPHON

ZUSAMMENSTELLUNG : JO WALDO

ARRANGEMENT : HANS SCHWARZ

3
TUTTI

1 OH MY DARLING CLEMENTINE

f

8

15

22 2 ROCK MY SOUL

3

1x TACET

31 3

4 DOWN BY THE RIVERSIDE

37

43

50 5

TUTTI

6

68

75 SOLI

83 TUTTI

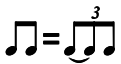
ff

QUICKSTEP DANCING

2.TENORSAXOPHON

ZUSAMMENSTELLUNG : JO WALDO

ARRANGEMENT : HANS SCHWARZ



1 OH MY DARLING CLEMENTINE

TUTTI

f

1

SOLI

8

15

1

2

2 ROCK MY SOUL

3

1

TUTTI PLAY

1

1.x TACET

3

1

SOLI

4 DOWN BY THE RIVERSIDE

37

43

5

12

TUTTI

6

50

68

1

3

3

75

SOLI

2

83

TUTTI

ff

QUICKSTEP DANCING

3
TUTTI
f

8

16 1 2

23 2 ROCK MY SOUL
3
1x TACET
TUTTI PLAY
3

32 4 DOWN BY THE RIVERSIDE
SOLI

39

45 5 12

63 6 TUTTI
1

70 3 3 SOLI

77 2

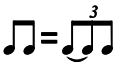
84 TUTTI
ff

QUICKSTEP DANCING

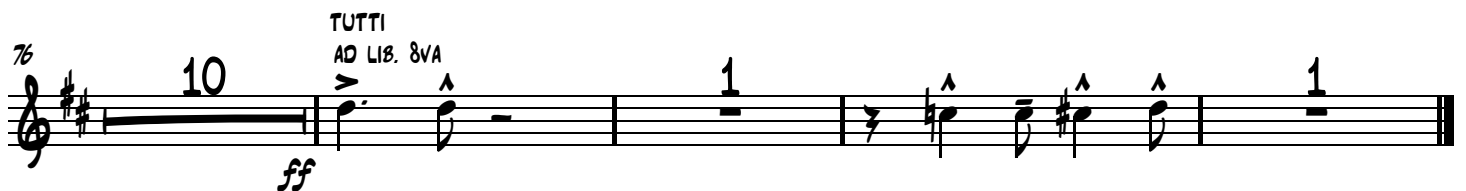
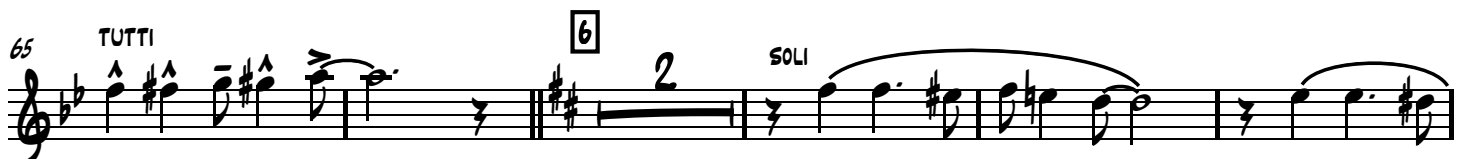
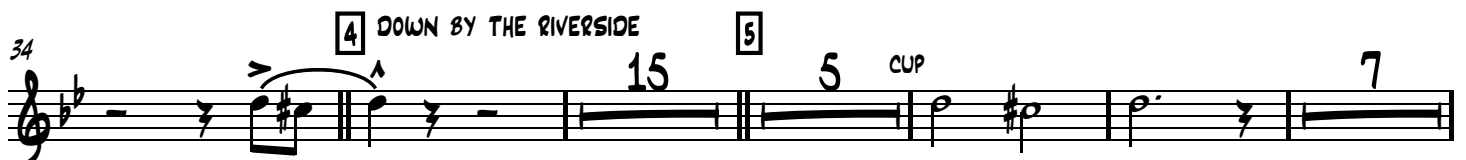
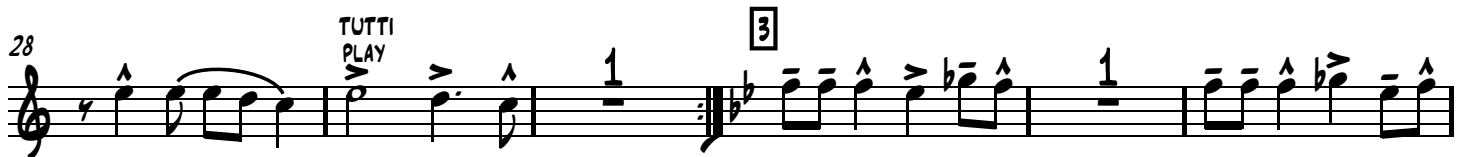
ZUSAMMENSTELLUNG : JO WALDO

ARRANGEMENT : HANS SCHWARZ

1. TROMPETE



1 OH MY DARLING CLEMENTINE

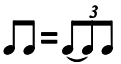


QUICKSTEP DANCING

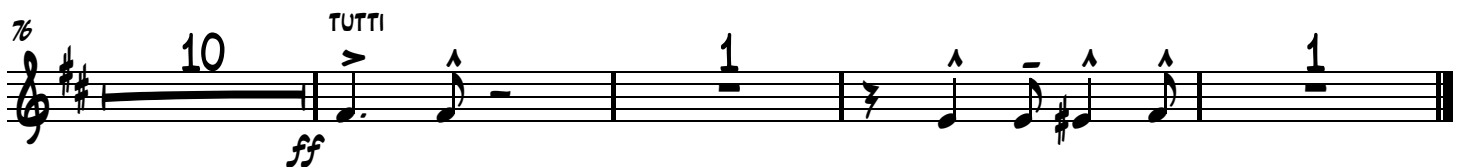
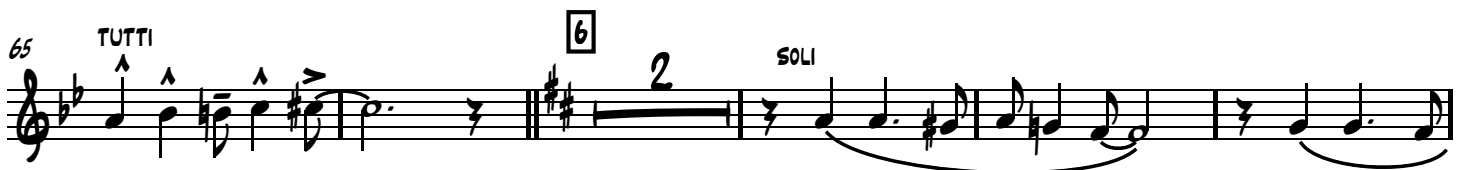
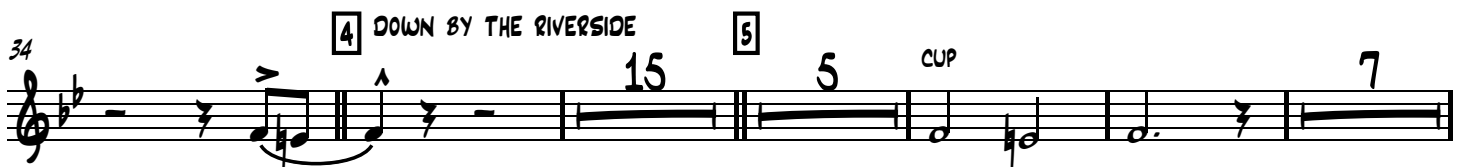
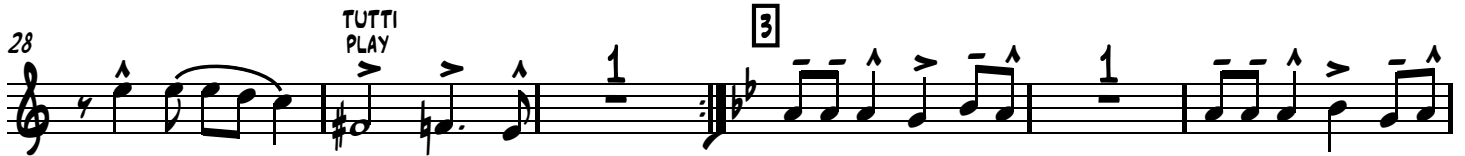
2.TROMPETE

ZUSAMMENSTELLUNG : JO WALDO

ARRANGEMENT : HANS SCHWARZ



1 OH MY DARLING CLEMENTINE



QUICKSTEP DANCING

3. TROMPETE

ZUSAMMENSTELLUNG : JO WALDO

ARRANGEMENT : HANS SCHWARZ

3. TROMPETE

1 OH MY DARLING CLEMENTINE

TUTTI

1XTACET

8

15

2 ROCK MY SOUL

1XTACET

28

TUTTI PLAY

3

34

4 DOWN BY THE RIVERSIDE

5 CUP

65

TUTTI

6 SOLI

72

76

10

TUTTI

ff

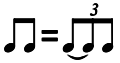
Detailed description of the musical score: The score is written for a 3rd Trumpet part in G major, 2/4 time. It consists of eight staves of music. The first staff begins with a treble clef, a key signature of one sharp (F#), and a 2/4 time signature. It starts with a triplet of eighth notes (G4, A4, B4) marked 'TUTTI' and a dynamic of 'f'. The first measure is followed by a series of eighth and quarter notes with accents. A first ending bracket labeled '1' spans measures 3-5. A first-tacet instruction '1XTACET' is placed above measure 6. The second staff continues with eighth and quarter notes, ending with a quarter rest. The third staff features a half note G4 with a slur, followed by eighth notes, and a first ending bracket with two endings labeled '1' and '2'. The fourth staff starts with a double bar line and a key signature change to D major, followed by quarter and eighth notes. The fifth staff begins with a double bar line and a key signature change to D minor, with 'TUTTI PLAY' above it, followed by quarter and eighth notes. The sixth staff starts with a double bar line and a key signature change to B minor, with a first ending bracket labeled '4' and a measure rest of 15. This is followed by a measure rest of 5 labeled '5 CUP', and then a measure rest of 7. The seventh staff begins with a double bar line and a key signature change to B major, with 'TUTTI' above it, followed by quarter and eighth notes. A first ending bracket labeled '6' spans measures 3-4, with 'SOLI' above it. The eighth staff continues with quarter and eighth notes. The final staff starts with a double bar line and a key signature change to G major, with a measure rest of 10, followed by quarter and eighth notes, and a dynamic of 'ff'.

QUICKSTEP DANCING

1. POSAUNE

ZUSAMMENSTELLUNG : JO WALDO

ARRANGEMENT : HANS SCHWARZ



TUTTI

1 OH MY DARLING CLEMENTINE



1XTACET



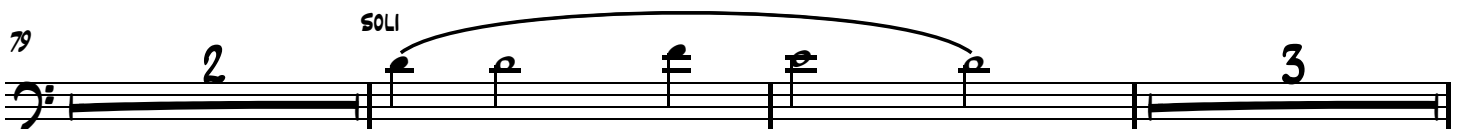
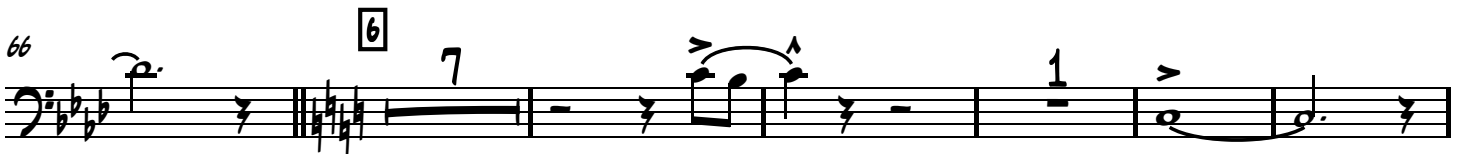
2 ROCK MY SOUL



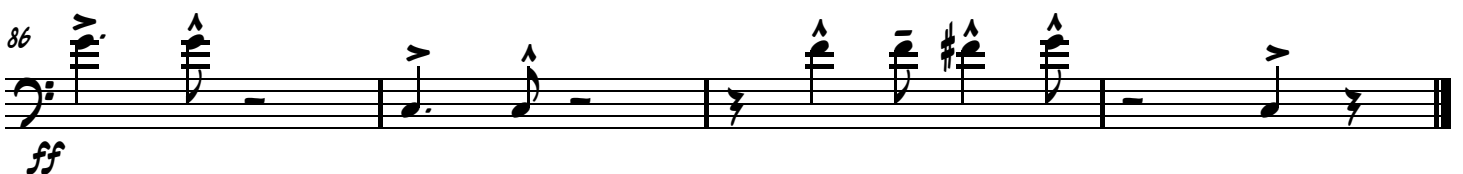
4 DOWN BY THE RIVERSIDE



TUTTI



TUTTI

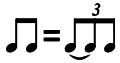


QUICKSTEP DANCING

2. POSAUNE

ZUSAMMENSTELLUNG : JO WALDO

ARRANGEMENT : HANS SCHWARZ



TUTTI

1 OH MY DARLING CLEMENTINE

1 1 1 1

f 1XTACET

8

15

1 2 2

1 2 2

2 ROCK MY SOUL

22

6 3 1

4 DOWN BY THE RIVERSIDE

33

15 14 TUTTI

66

7 1

79

2 SOLI 3

86 TUTTI

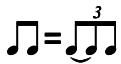
ff

QUICKSTEP DANCING

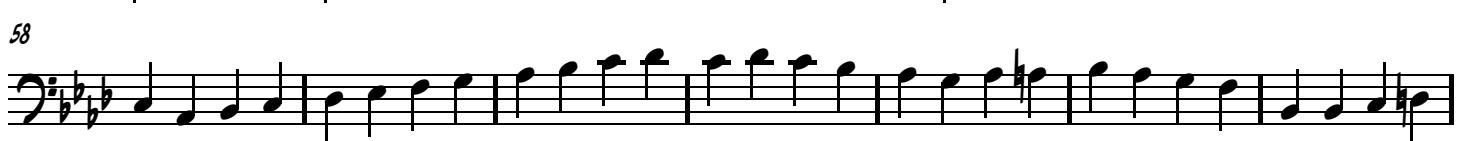
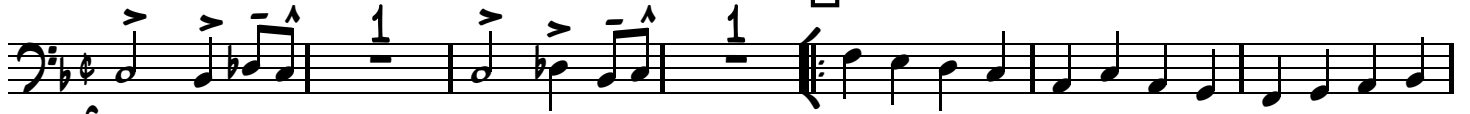
ZUSAMMENSTELLUNG : JO WALDO

ARRANGEMENT : HANS SCHWARZ

BASS



1 OH MY DARLING CLEMENTINE



QUICKSTEP DANCING

ZUSAMMENSTELLUNG : JO WALDO

ARRANGEMENT : HANS SCHWARZ

DRUMS

♩ = $\frac{3}{4}$ ♩

1 OH MY DARLING CLEMENTINE

Musical notation for the first system, measures 7-13. It features a drum staff with a 3/4 time signature. The notation includes eighth and sixteenth notes with accents and slurs. A 'PICK UP' instruction is present above measure 11. A 'FILL' instruction is shown as a dotted line between measures 10 and 11. The system ends with a repeat sign and a '1x TACET' instruction.

Musical notation for the second system, measures 14-20. It continues the drum pattern with various rhythmic figures and rests. A first ending bracket labeled '1' spans measures 19 and 20.

Musical notation for the third system, measures 21-27. It begins with a second ending bracket labeled '2' over measures 21-22. A 'PICK UP' instruction is above measure 23. The system ends with a repeat sign and a '2' in a box, indicating the start of the next section.

Musical notation for the fourth system, measures 28-34. It features a 'SOLO' instruction above measure 33. A 'FILL' instruction is shown as a dotted line between measures 33 and 34. The system ends with a repeat sign and a '3' in a box.

Musical notation for the fifth system, measures 35-41. It starts with a '4' in a box and the title 'DOWN BY THE RIVERSIDE'. The system consists of six measures of rhythmic notation.

Musical notation for the sixth system, measures 42-48. It consists of seven measures of rhythmic notation, with an '8' above measure 42.

Musical notation for the seventh system, measures 49-55. It consists of seven measures of rhythmic notation, with a '5' in a box above measure 50 and a '16' above measure 49.

Musical notation for the eighth system, measures 56-62. It consists of seven measures of rhythmic notation, with a 'FILL' instruction above measure 56 and an '8' above measure 58.

Musical notation for the ninth system, measures 63-69. It features a '6' in a box above measure 66. The notation includes eighth notes with accents. A 'FILL' instruction is shown as a dotted line between measures 69 and 70.

Musical notation for the tenth system, measures 70-76. It consists of seven measures of rhythmic notation, with an '8' above measure 73.

Musical notation for the eleventh system, measures 77-83. It consists of seven measures of rhythmic notation, with a '16' above measure 77.

Musical notation for the twelfth system, measures 84-90. It features a 'FILL' instruction above measure 87. The notation includes eighth notes with accents. The system ends with a double bar line.

QUICKSTEP DANCING

♩ = $\frac{3}{4}$

TUTTI

SAX

C^6 B^b6 D^b6 C^6 C^6 D^b6 B^b6 C^7

f

5 **1** OH MY DARLING CLEMENTINE

F^6

10

C^7 G^M7

14

C^7 E^o F^6 D^M7 G^M7 C^7 E^o

19 **1** **2** **2** ROCK MY SOUL

1x SOLO 2x TRPT.

F^6 B^b6 2x WALK

2
PIANO

24

F7 B^b6

29 **TUTTI**

3

C⁹ F7 B^b6 E^b6 D^b6 E6 E^b6

33

4 **DOWN BY THE RIVERSIDE**

SAX

E^b6 E6 D^b6 E^b7 A^b6 D^b6 E^o

37

A^b6 E^b7

41

A^b6 D^b6 E^o

45

Ab6 Bbm7 Eb7 Ab6

50 SOLO 5

Ab7 Db6 Ab6

54

Eb7 G Ab6

58

Ab7 Db6 Ab6

62 SAX TUTTI

Bb7 Eb7 E7 F7 F#7 G7

66 6 TRPT.

C⁶ F⁶ D⁰ C⁶

71 SAX

G⁷ C⁶

75

F⁶ D⁰ C⁶

79 SOLO SAX

DM⁷ G⁷ DM⁷ G⁷ DM⁷ G⁷

85 TUTTI

C⁶ B^{b6} H⁶ C⁶

ff